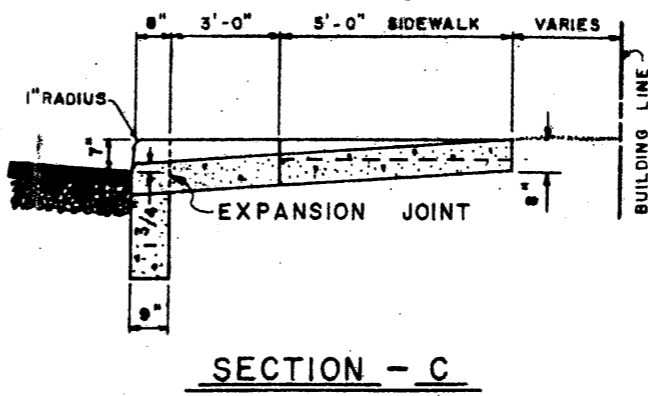
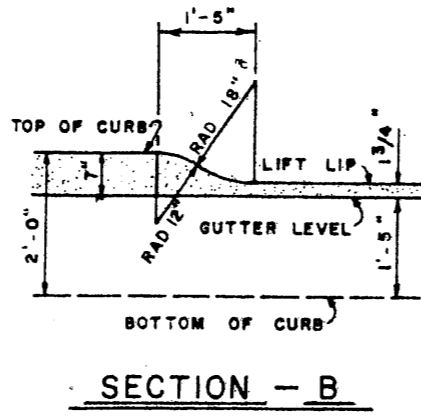
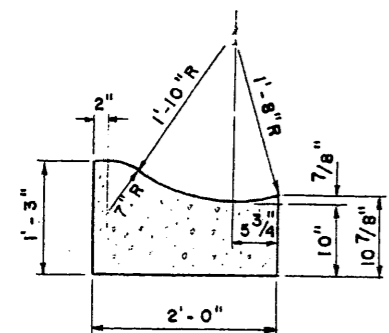
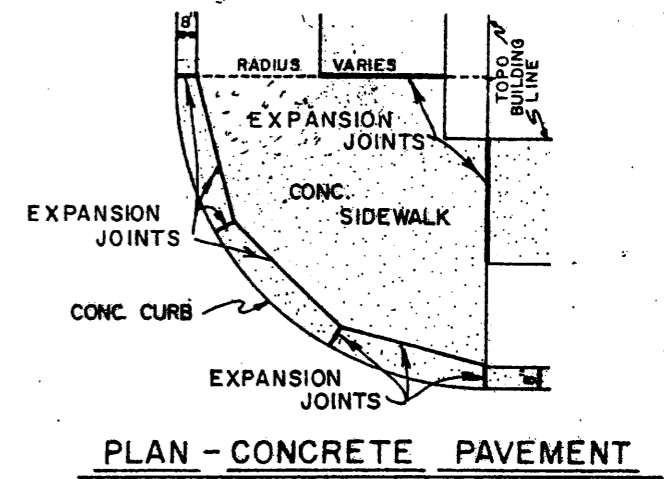
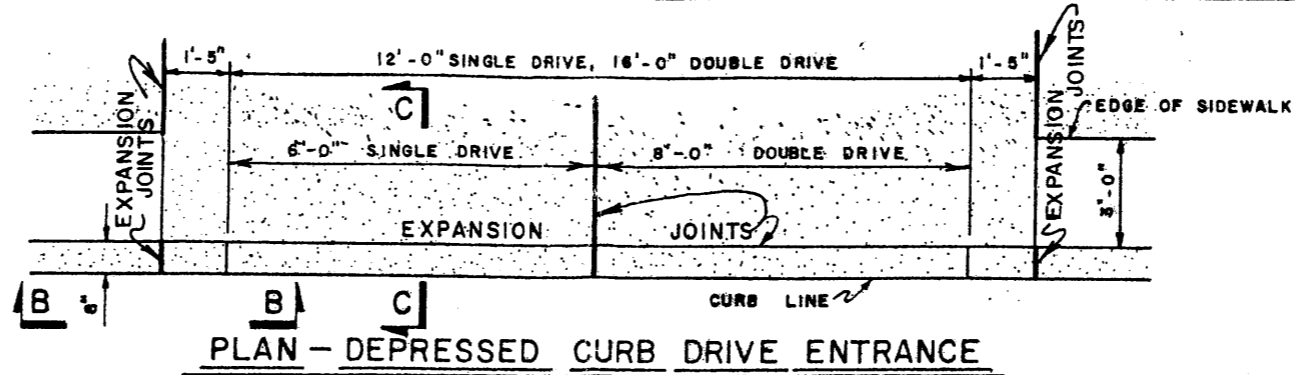
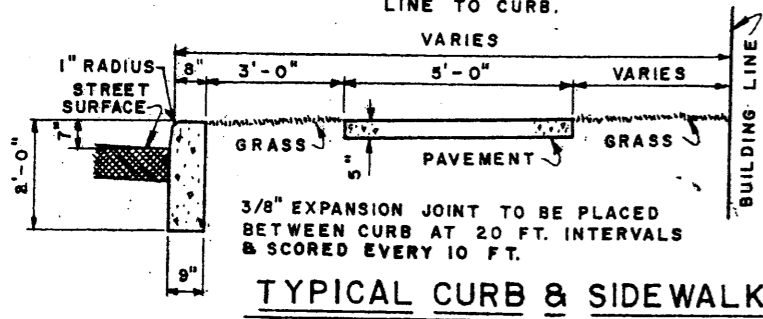
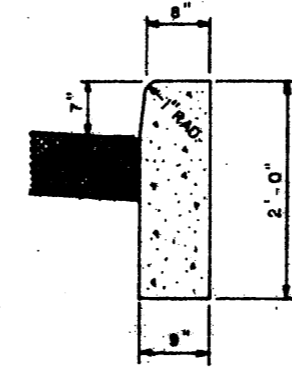
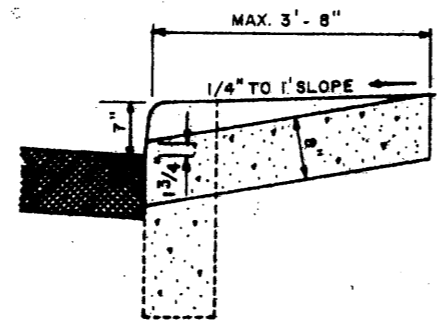


NOTE: SLOPE FOR ALL PAVEMENTS  
1/4" PER FOOT-BUILDING  
LINE TO CURB.

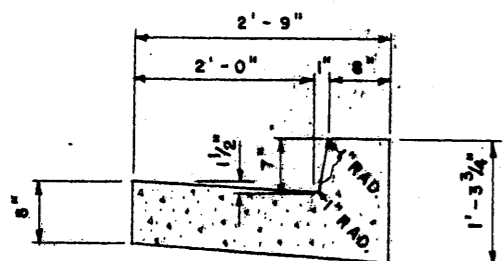


COMBINATION CONCRETE ROLL  
TYPE CURB & GUTTER

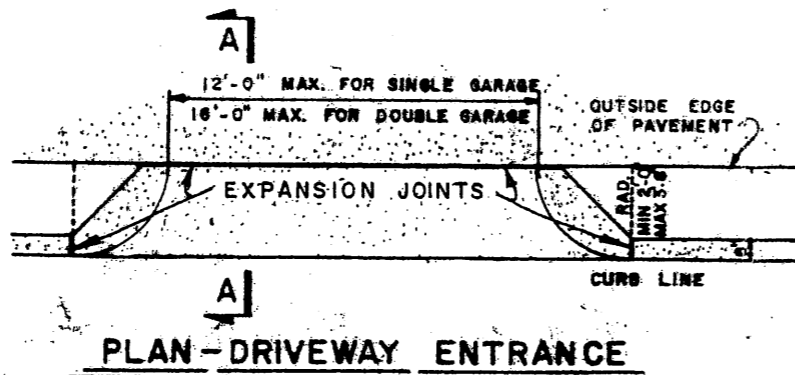


| RADIUS | ARC                      |
|--------|--------------------------|
| 12'-0" | RADIUS ARC = 18'-10 1/4" |
| 10'-0" | RADIUS ARC = 15'-8 1/2"  |
| 9'-0"  | RADIUS ARC = 14'-1 3/4"  |
| 8'-0"  | RADIUS ARC = 12'-6 3/4"  |
| 6'-0"  | RADIUS ARC = 9'-5"       |

PLAN - CONCRETE CURB CORNERS



COMBINATION CONCRETE  
CURB & GUTTER



NOTE:  
PAVEMENT TO BE SCORED EVERY 5FT FOR SIDEWALKS  
OF 5FT IN WIDTH & EVERY 4FT-4IN FOR SIDEWALKS  
OF 4FT-4IN IN WIDTH ALONG WITH 3/8" EXPANSION  
JOINTS PLACED AT 20FT INTERVALS.

ALL EXCAVATION WITHIN THE CARTWAY AREA SHALL BE  
BACKFILLED WITH PENN. D.G.T. NO 2 R.C. LIMESTONE  
MATERIAL TO THE GRADE OF THE EXISTING ROADWAY  
SURFACE.

|  |                                 |           |
|--|---------------------------------|-----------|
| BOROUGH OF BIRDSBORO<br>BERKS COUNTY, PENNSYLVANIA | SPOTTS, STEVENS and MCCOY, INC. |           |
|  | CONSULTING                      | ENGINEERS |
| ORDINANCE PLAN                                     |                                 |           |
| CURB, SIDEWALK AND<br>DRIVEWAY CONSTRUCTION        | NONE<br>7030-18-B-002           | 2         |